

# 2022 April Bonus Storm

April 23rd & 24<sup>th</sup>

Weather Forecast not good  
for Western ND

Mother Nature or Old Man  
Winter paid MVEC a visit!



Over 3,000 Poles

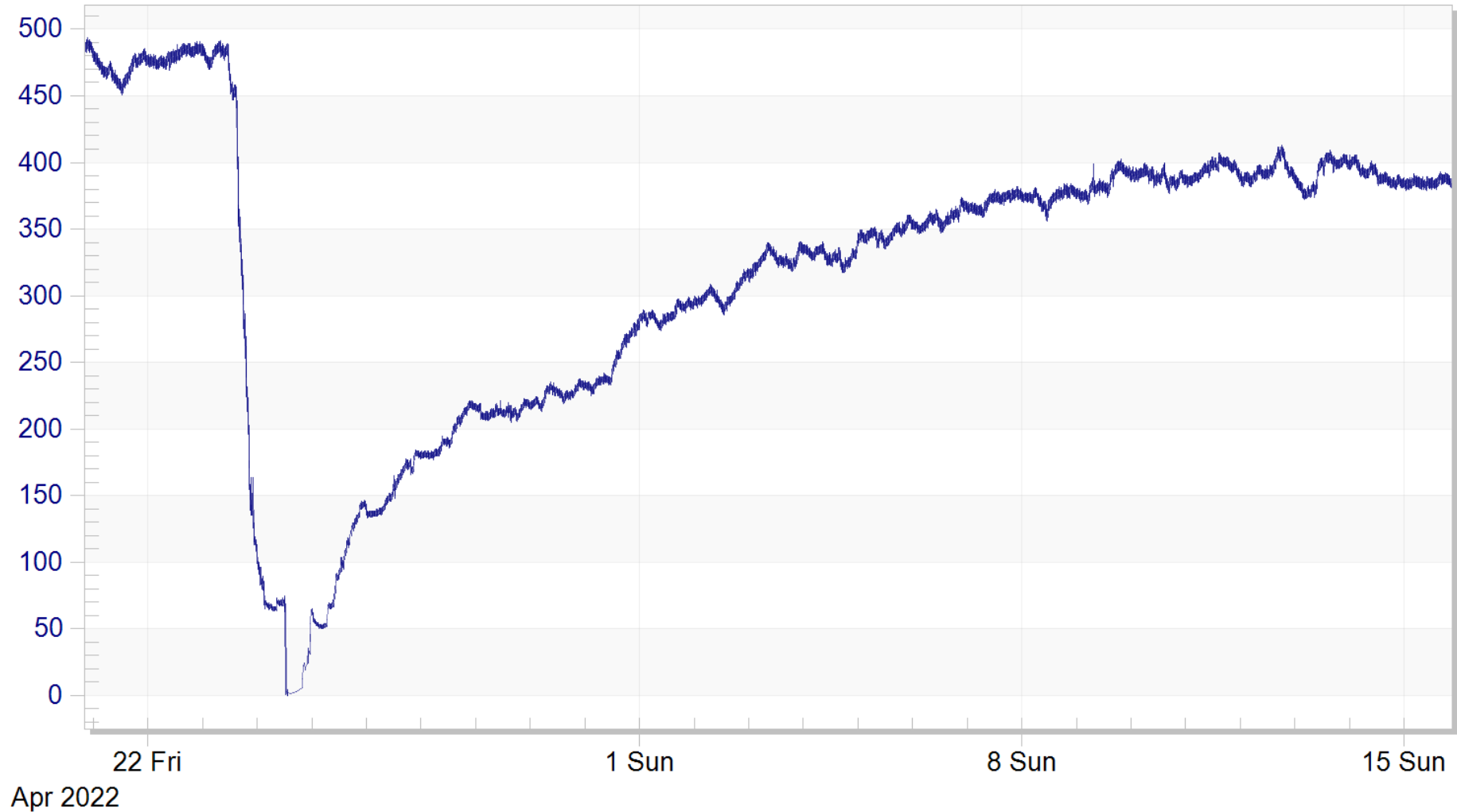
Over 200 Transformers

\$22 million in damage



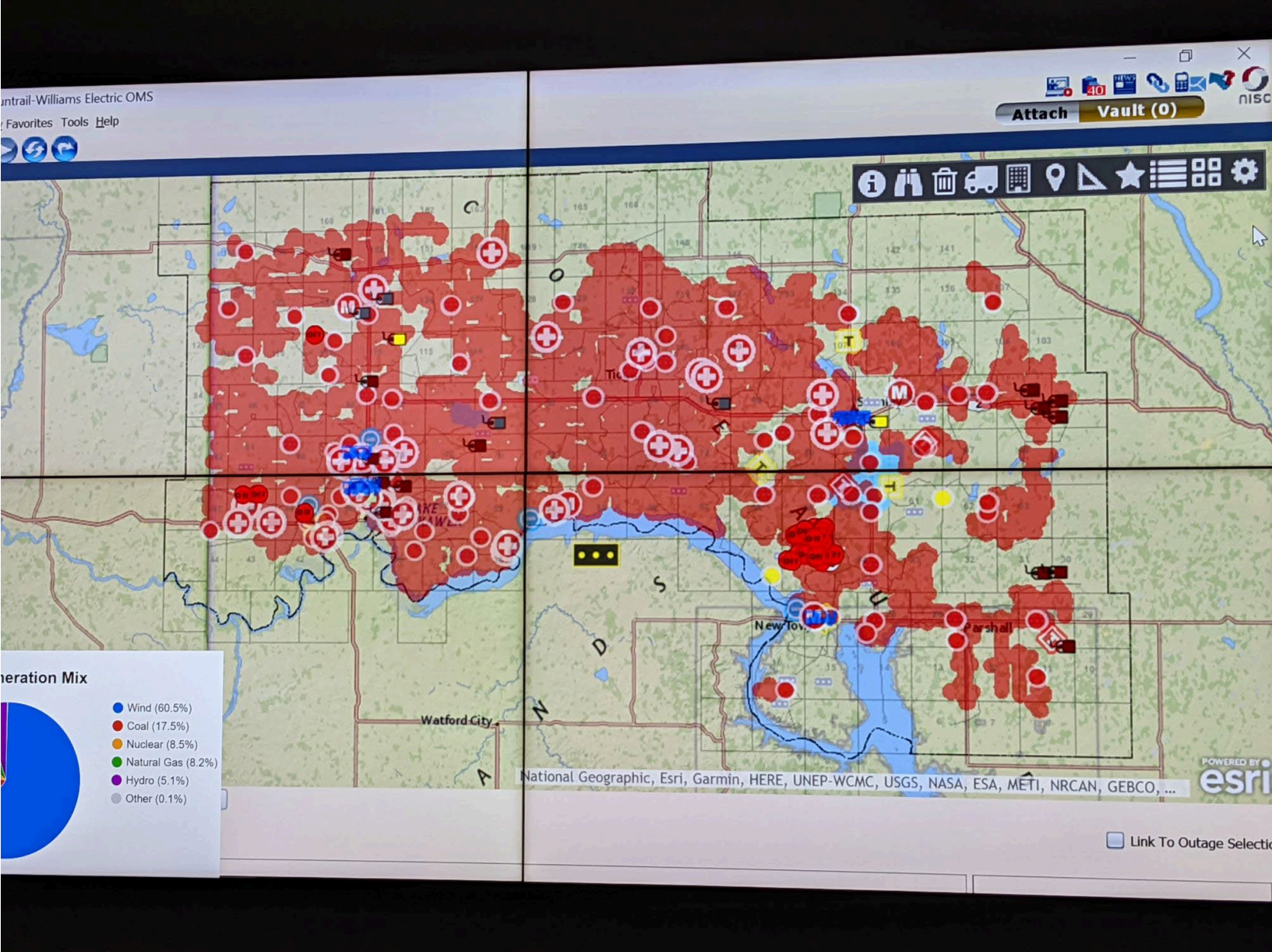
# Mountrail-Williams Electric

Load Profile April 20<sup>th</sup> to May 16<sup>th</sup>



# Dispatchers Outage Map

Lost all transmission service to MWEC from WAPA and Basin



# April Storm Timeline

- April 22<sup>nd</sup> and 23<sup>rd</sup>
- Sunday evening, called our Material Supplier (Chris Pederson) and RESCO was on site immediately.
- First day - Activated the Emergency Response Plan...along with County
- Safety Protocols were set up.
- First days all we got done was clear highway crossings on major highways for the plows.
- County roads weren't open yet, so we could only see what was along the major highways and it didn't look good.
- Used Drones to fly lines in areas it was tough to get to.
- Started patrolling the line for damage assessment.
- Calling in help from other coops and contractors

# Drones

Provided I-Sight with the pole locations and they would fly it and match it to our data



# Drones Data:



# Line Personnel Preparing Staking Sheets and Material



**052-18-7622**

052-18-7622	
gs_guid	{22BB9491-876F-3946-A5A4-DED7D02D9B88}
gs_vc_revision	17374
gs_old_objectid	<Null>
gs_symbol_rotation	0
gs_subtype_cd	6
gs_map_no	75
gs_work_initiation_id	<Null>
gs_substation	<Null>
gs_description	<Null>
gs_height	70
gs_class	H1
gs_installation_date	<Null>
gs_comments	<Null>
gs_date_created	1/21/2015 5:05:13 PM
gs_date_modified	3/18/2022 11:37:49 AM
gs_owner	<Null>
gs_old_layer_name	<Null>
gs_obj_no	<Null>
gs_feeder_number	<Null>
gs_nisc_guid	<Null>
gs_facility_id	052-18-7622
gs_shape_from_gps_sw	<Null>
gs_vc_modified_sw	<Null>
gs_year	2015
gs_related_staking_guid	<Null>
map_label_pole_type	Transmission
map_label_pole_model_year	Height/Class: 70-H1 Year: 2015
Insp_Tie_Wire_Issue	<Null>
Insp_Conductor_Issue	<Null>
Insp_Pole_Ground_Issue	<Null>
Insp_Insulator_Issue	<Null>
Insp_Loose_HW_Issue	<Null>
Insp_Pole_Issue	<Null>
Insp_Guy_Marker_Issue	<Null>
Insp_Guy_Wire_Issue	<Null>
Insp_Cross_Arm_Issue	<Null>
Insp_CA_Brace_Issue	<Null>
Insp_Other_Issue	<Null>
Insp_Comment	<Null>
Insp_Repair_Complete	<Null>
Insp_Vegetation_Issue	<Null>
Inspection Substation	64

Imagery Date: 5/30/2017 48°09'27.65" N 103°27'30.72" W ele



Search

Search

ex: Tokyo, Japan

Get Directions History

Places

- [no name]
- Powerline
- Basin 115 kV
- CP 115
- Substations.kmz
  - Substations
    - Mountrail County
    - Williams County
- MWEC Transmission 8-22-22.kmz
  - Switches
  - Williams Co
  - Mountrail Co.
- Temporary Places
  - Pleasant Valley Cir 3.kml
    - Pleasant Valley Cir 3
      - Made with [Mapollage](#) 4/27/22 11:01 PM
      - Wide Angle
      - Zoom Angle

Layers

- Primary Database
- Announcements
- Borders and Labels
- Places
- Photos
- Roads
- 3D Buildings
- Weather
- Gallery
- More
- Terrain



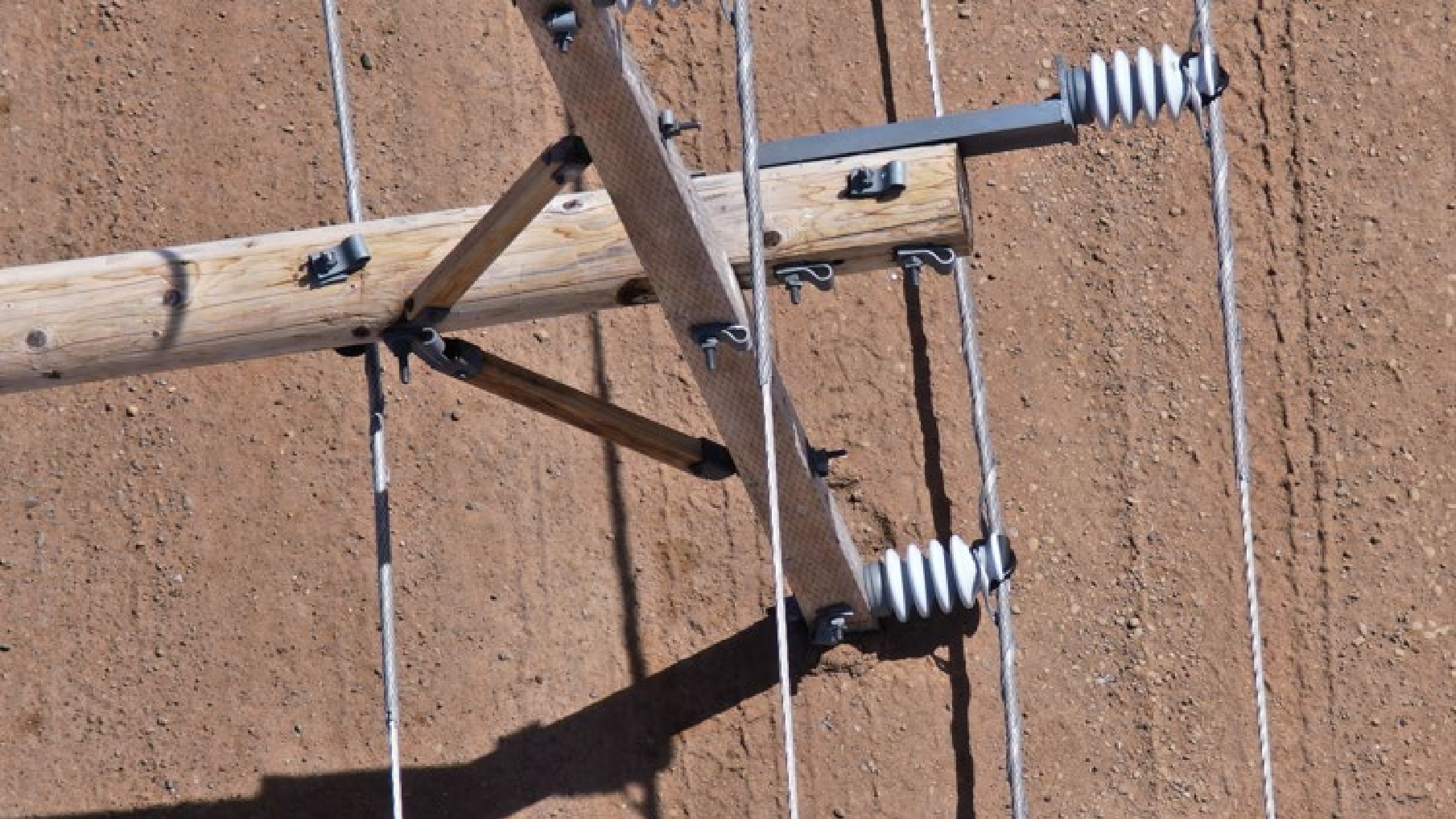
0088 Z.JPG











# Materials and Supplies



# Material Arriving





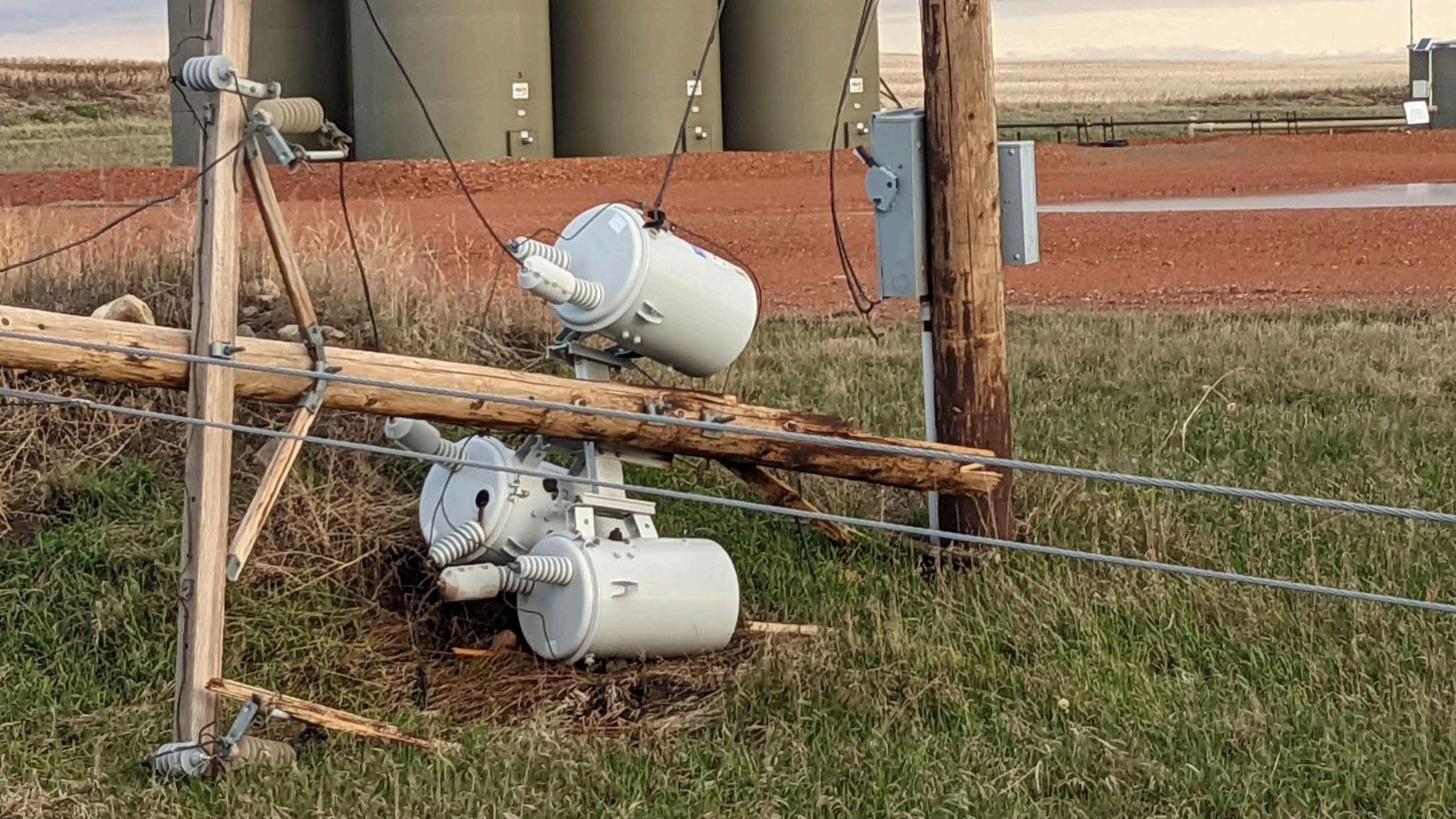


Thousands of Fiberglass Crossarms

# Truck Loads of Material









# Calling for HELP from fellow Coops! Plus Contractors

Cass County Electric  
Dakota Valley  
NoDak Electric  
Lower Yellowstone  
McCone Electric  
3-C

Plus Contractors



# Safety--Safety-- Safety

Your  
Location: \_\_\_\_\_

Nearest  
Intersection: \_\_\_\_\_

Nearest Medical  
Facility: \_\_\_\_\_

## Calling "Mayday"

1. Secure scene first
2. Call office "Mayday"
3. Give your name
4. Reason for call
5. Assistance needed
6. Give location of injury
7. Give necessary first/aid CPR
8. What's being done for injured
9. Have message read back



## Receiving "Mayday"

1. Document time of call
2. Get name of person calling
3. Location of accident (map, section)
4. Type of accident (electrical, auto, public)
5. Emergency assistance needed
6. What's being done for injured
7. Read back message
8. Notify line superintendent immediately
9. Call emergency assistance needed.





2027 MWEC  
Cable Installation

Maximum  
Occupancy  
399



# Energy in---Energy (Work) Out!

Beef Steaks



Fresh Muffins



Pork Lions

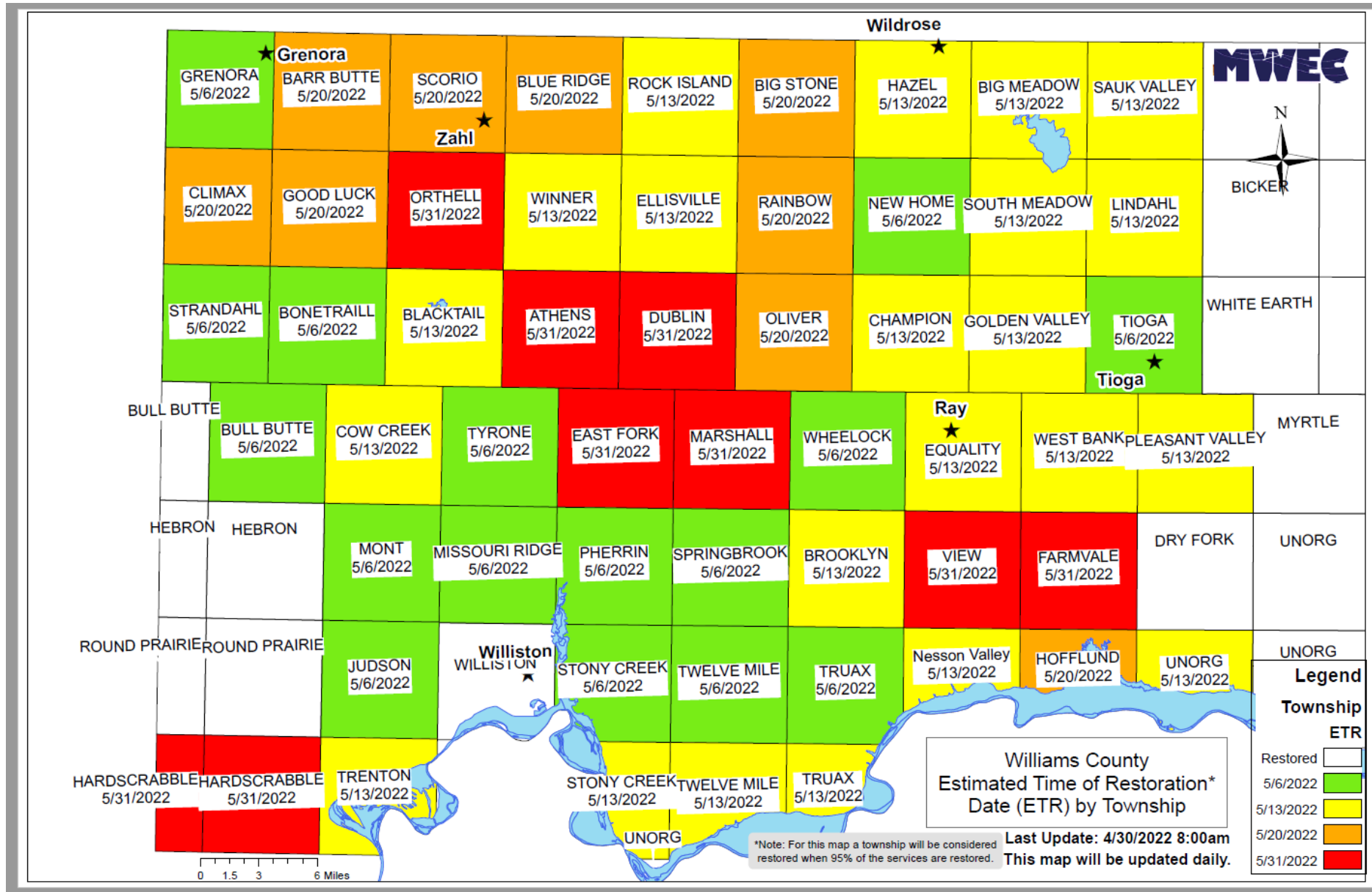


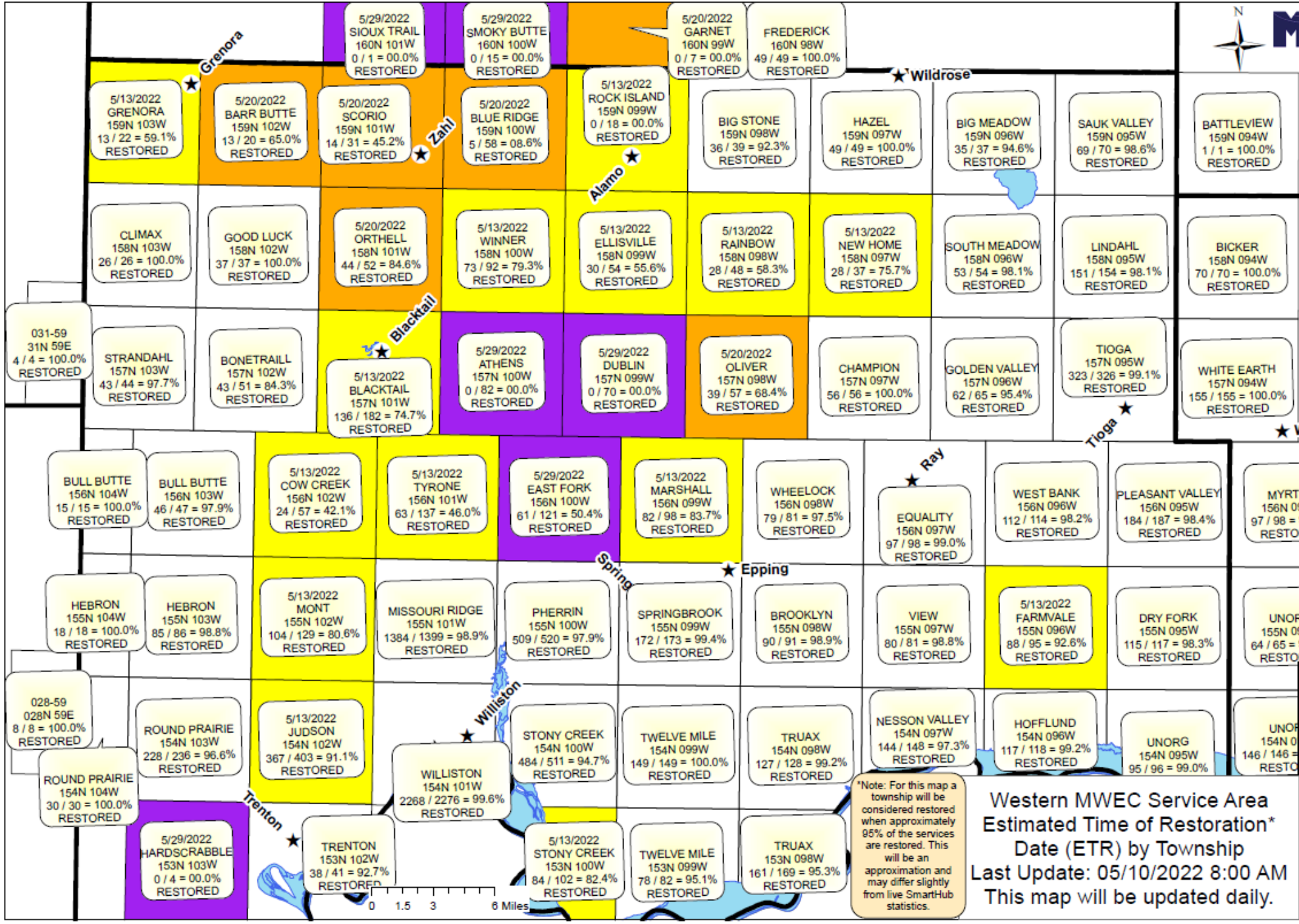


You  
Rotate  
Crews



# Web Page and Face Book Communication





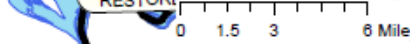
\*Note: For this map a township will be considered restored when approximately 95% of the services are restored. This will be an approximation and may differ slightly from live SmartHub statistics.

Western MWEC Service Area  
 Estimated Time of Restoration\*  
 Date (ETR) by Township  
 Last Update: 05/10/2022 8:00 AM  
 This map will be updated daily.

**Legend**

**Township ETR**

- Restored
- 5/6/2022
- 5/13/2022
- 5/20/2022
- 5/29/2022
- 5/31/2022



# Wrap Up is this.....

- SAIDI count was 7214 Hours which is 5 days for every member
- 3000 poles represents only 3% of our total poles on system
- Longest residential member out for 32 days
- What if this storm took out 30%....40%...50%....



*More than 2,000 trucks with more than 6,000 workers rolled into the 80 acre staging site in The Villages.*