

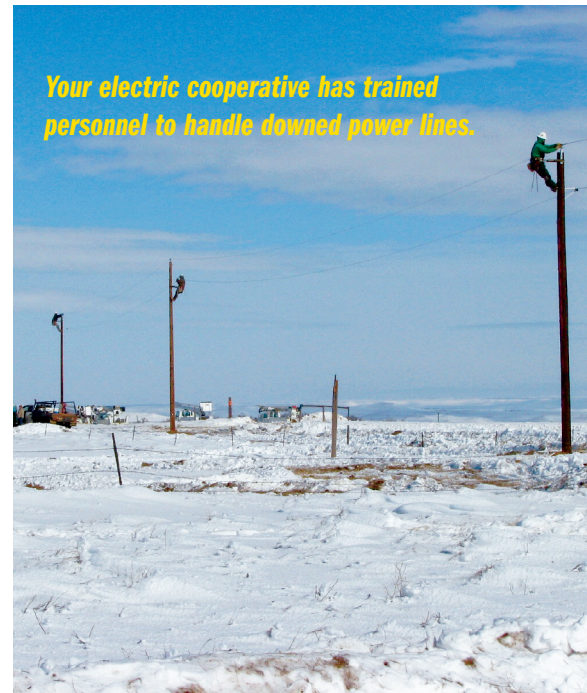
Power line facts....

MYTH: Power lines are insulated or coated like power cords and can be touched safely.

FACT: Power lines aren't insulated and what may appear as insulation is actually weatherproofing material. *Wires should not be touched under ANY circumstance.*

MYTH: Birds land on power lines so they must be safe to touch.

FACT: Electricity wants to go to ground. When birds land on power lines they do not represent a path to ground so the current stays on the wire.



This complimentary brochure can be downloaded from www.ndarec.com

NDARECs

North Dakota Association of
Rural Electric Cooperatives

3201 Nygren Dr. NW

Mandan, ND 58554

Phone: 701-663-6501

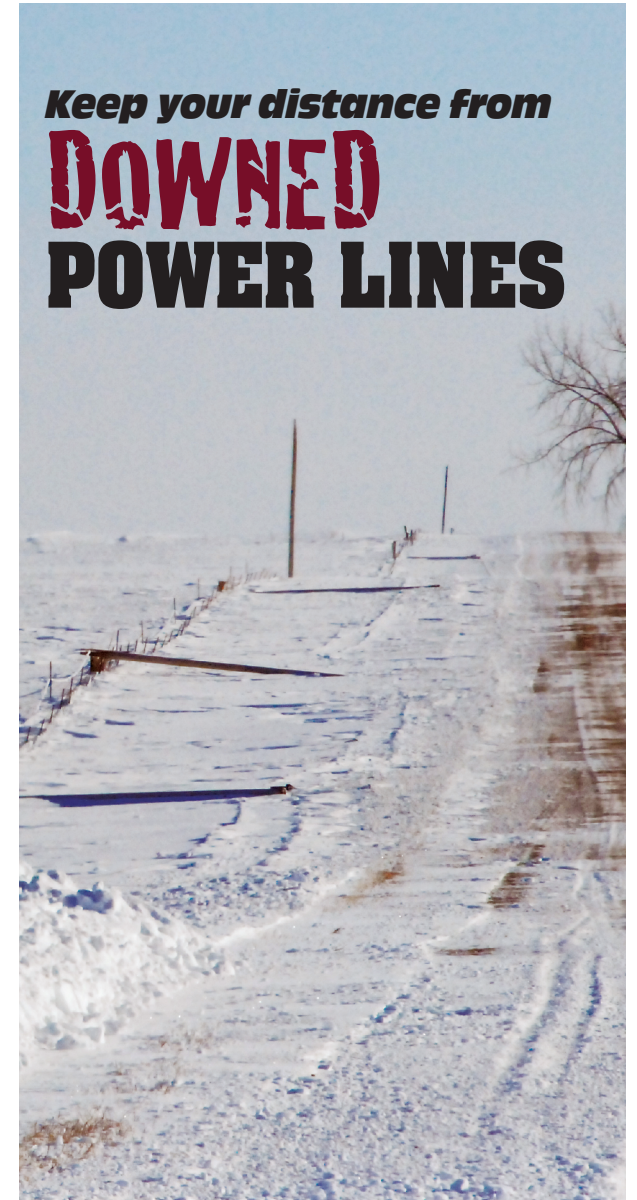
Fax: 701-663-5745

NDARECs

North Dakota Association of
Rural Electric Cooperatives

A Touchstone Energy® Cooperative 

**Keep your distance from
DOWNED
POWER LINES**



Keep your distance from

DOWNED POWER LINES



When a power line is down

Always **keep your distance** from downed power lines because they carry an electric current that can instantly injure or cause death. Do not touch the power line or anything or anyone the line may be touching. Objects can become energized just by touching a downed power line. Even telephone or cable lines can become energized, so stay away from all wires.

Vehicular contact with a power line

If your vehicle comes in contact with a downed power line, **STAY PUT!**

Call 911. If possible, honk and lower your window to alert passers-by. Caution them to stay away from the vehicle and ask them to call 911.



Exiting your vehicle

Unless your vehicle is on fire, you should stay put. If you must exit the vehicle, remove all loose items or clothing and jump clear of the vehicle. Avoid touching the car and the ground at the same time. Land with both feet together, and keeping your feet as close together as possible, shuffle or “bunny hop” away from the car.